



2023

2023

ANNUAL REPORT

MCH EHS THROUGH THE YEARS



SUPPORTING FAMILIES FOR 100 YEARS





MCH HISTORY



Moore Community House, Inc. (MCH) is a private non-profit corporation that offers an Early Head Start (EHS) program and Women in Construction (WinC) job training program. MCH helps our community flourish by strengthening family economic security. The agency has served families of East Biloxi since 1924. As we approach 100 year, MCH's continues to serve the Mississippi Gulf Coast communities in Harrison County through two major programs that research shows make the most strategic and positive difference in moving low-income families closer to self-sufficiency: affordable, high-quality child care and family support services through our Early Head Start program; and job training leading to higher paying nontraditional jobs through our Women in Construction program. Together these proven, impactful programs improve economic security for low-income women and their young children.

MCH MISSION



Moore Community House, Inc. is a non-profit advocacy and social service organization empowering people to make positive changes in their lives and their community. As a mission agency of United Methodist Women, Moore Community House designs programs aimed specifically at improving circumstances for low-income women and young children.



EXECUTIVE DIRECTOR

CAROL BURNETT



This is a banner year for Moore Community House. We are celebrating our 100th anniversary! What a long history of work with families! Over these many years we have offered our communities' low-income women and their young children so many programs and services: kindergarten before kindergarten became part of our public schools' curriculum, affordable child care, after school and summer programs for school-aged children, community gardens, adult literacy, Women in Construction job training, and - since 1998 - Early Head Start. Early Head Start is a high quality early childhood program for our infants and toddlers and a comprehensive program offering many family support services for the parents and families of our enrolled children.

I want to thank all of you for being part of our team serving our children and their families.

This is also a special year for me. I have been blessed to serve as MCH's Executive Director for 35 years. But this year I am retiring. Our very capable Branden Forshee is stepping into the role of Executive Director. These changes will take place on April 15.

I wish everyone - our fabulous team at MCH and our large network of community partners - all the best as you move forward into the next 100 years in service to families in our community!

-Carol Burnett



AUDITS AND MONITORING

Federal Program Monitoring

The Administration of Children and Families (ACF) / Office of Head Start (OHS) conducted a Focus Area Two (FA2) monitoring review for the MSU MCH EHS partnership program. The program's performance and compliance with Head Start Program Performance Standards (HSPPS), Public Law 110-134, Improving Head Start for School Readiness Act of 2007, and other applicable regulations were evaluated. The program met 100% of the compliance measures. Meanwhile, the MCH EHS program was in preparation to apply for an additional five-year grant.

FISCAL AUDIT RESULTS

Financiality Accountabilty

Total Revenue: \$1,948,376.83

Total Expenses

- Personnel/Fringe: \$1,377,998.17
- Travel: \$13,655.73
- Equipment: \$149,284.71
- Supplies: \$155,572.62
- Contractual: \$25,274.25
- Other: \$227,482.34

Total Expenses: \$1,949,267.82

Fiscal Audit Results:

The outcome of this audit revealed no findings.

MCH EHS Leadership and Governance

Governing Board

- Linda Lightsey, President
- Lisa Michiels, Treasurer
- Ann Smith, Secretary & Early Childhood Expert
- Stacy Bullard-Casey, Financial Expert
- Rev. Elijah Mitchell
- Mary Ann O'Gorman
- Rev. Dr. Larry Hilliard
- Kiara Taite, Legal Expert

Policy Council:

- Facilitator: Sabree Hamilton
- Secretary: Jasmine Anderson
- Co Secretary: Justine Hodes
- Policy Council Liaison: Lanique Jordan
- Treasurer: Skye Wilkinson

Parent Committee

Facilitator: Sabree Hamilton
Secretary: Skye Wilkinson
Co Secretary: Justine Hodes

MCH Administrative Team

Carol Burnett
Executive Director



Branden Forshee
Director of Operations



Kara Vesa
Fiscal Officer



Amaja Bush
**Human Resource
Coordinator**



Katina Spaulding
EHS Program Director

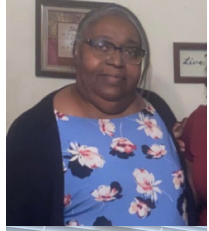


Ruth Manaza
**WINC Program
Director**



MCH EHS Education Management Staff

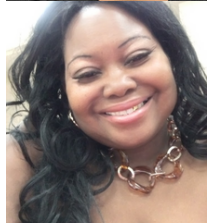
MCH EHS Support Staff



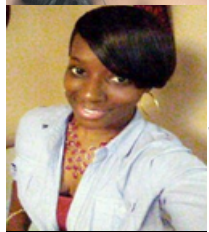
Margaret Crawford,
Education Specialist & Disabilities
Manager



Trully Turner
Teacher Coach for All Sites



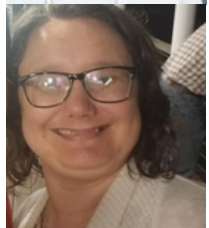
Rheta Edwards
Kitchen Manager for all
Sites



Karen Abrams
Diverse Learners Coordinator
for all sites

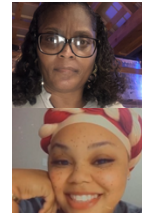


Leon Britton,
Maintenance and Facilities
and IT



Greta Miller
Data Specialist

Nichols Building



Sharon Hinton, Center Manager

DeAundra Simmons
Assistant Center Manager & Mentor Teacher

Davis Building

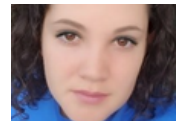


Latory Hunter Center Manager



Latoria Sumrall
Assistant Center Manager & Mentor Teacher

Bayou View Building

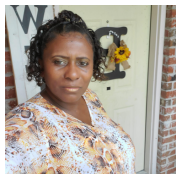


Alison Omelia Center Manager



Jessica Butler
Assistant Center Manager & Mentor Teacher

Linda Lyons Building



Janell Hanks Center Manager



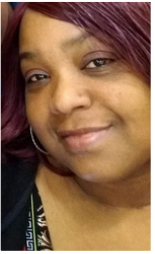
Monica Bradley
Assistant Center Manager & Mentor Teacher

Family Health Service Team



Josephine Gibbs

Family Health Services Specialist



Alisha Curtis

Health and Nutrition Monitor for all Sites



Family Health Service Advocates



Shayla Taylor

Davis Family Health Services Advocate



Nareliz Rivera

Davis Family Health Services Advocate



Tenisha Hasan

Nichols Family Health Services Advocate



Zakiyyah Hasan

Bayou View Family Health Services Advocate



Jana Kij

Linda Lyons Family Health Services Advocate

MCH EHS DIRECTOR



I am Katina Spaulding, MCH EHS's Program Director. I have a Bachelor's degree in Children and Family Studies from Jackson State University. I am passionate about helping and teaching others to be better than their circumstances. Serving my community brings me great pleasure. I am a leader of many and praise God for thinking enough of me to place me in this position. MCH EHS has blessed me and many others. I am grateful for all we do.

Katina Spaulding



PROGRAM GOALS

- MCH EHS Goal One: MCH EHS will provide quality services to the youngest children to set solid foundations for lifelong learning and meet future expansion opportunities for providing these services to additional children.
- MCH EHS Goal Two: MCH EHS will provide support, information, and resources for families of enrolled children facing economic and social hardships to build resilient and self-motivated families for an effective community.
- MCH EHS Goal Three: MCH EHS will promote a holistic wellness approach to uplift the future health status of Mississippi children and families.
- MCH EHS Goal Four: MCH EHS will provide high-quality, individualized experiences and responsive, nurtured care to increase their potential to enter Kindergarten with a solid academic foundation that promotes success throughout their educational career.
- MCH EHS Goal Five: MCH EHS will provide tools and resources for all staff to be confident, capable, and successful in their developing careers.

SCHOOL READINESS GOALS

- School Readiness Goal 1: The children are healthy and have developed the physical skills necessary to succeed in school. (Perceptual, Motor, and physical development)
- School Readiness Goal 2: Children have a positive picture of the self that will affect every area of growth, including developing trusting relationships with others. (Social- Emotional development)
- School Readiness Goal 3: Children demonstrate an interest in learning, resulting from continuity of care, individualization, and family support. (Approaches to Learning/Cognitive)
- School Readiness Goal 4: Children communicate through languages and gestures. (Language and Literacy)
- School Readiness Goal 5: Children have problem-solving abilities and concept attainment (Cognition/Math)

MCH EHS Enrollment Data

MCH EHS Children

124

Infant & Toddler Children who are Zero to Three
One Pregnant Mom

125

Cumulative Enrollment Total Children and Pregnant Women



MSU-MCH EHS

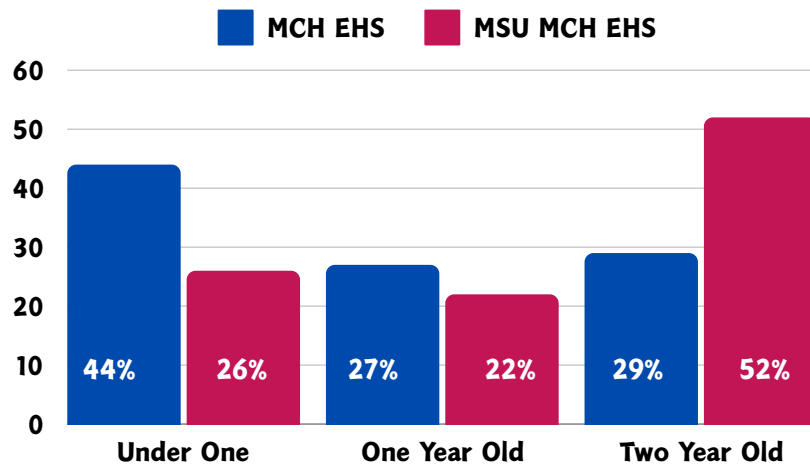
27

Infant & Toddler Children who are Zero to Three
Four Pregnant Women

31

Cumulative Enrollment Total Children and Pregnant Women

CHILD BY AGE (AT THE TIME OF ENROLLMENT)



MCH EHS

23 Dual Language Children

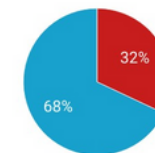


MSU-MCH EHS

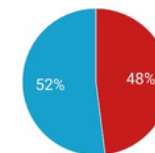
One Dual Language Child

Enrolled in Prior Years

Enrolled in Prior Years (Red) Newly Enrolled (Blue)

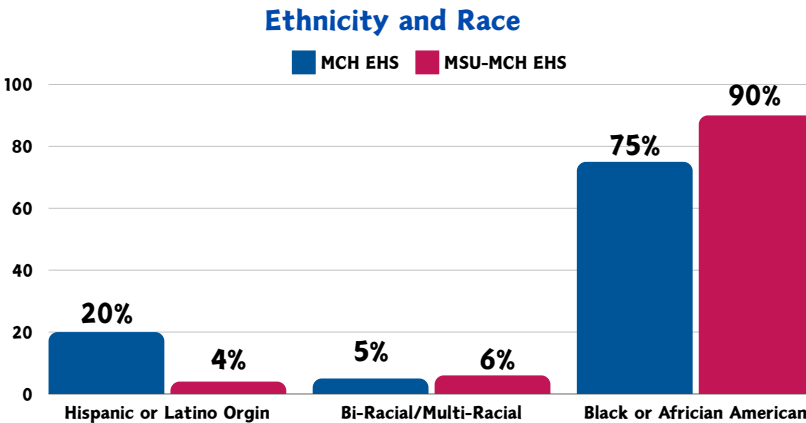
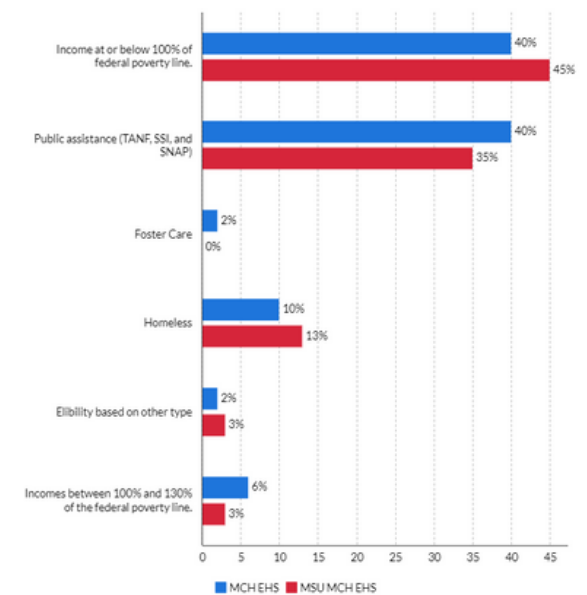


MCH EHS



MSU MCH EHS

Primary Eligibility At the time of Enrollment



MCH EHS Family Demographics

MCH EHS Families

Family Served

112 Families

Two Parent/Guardian Family

14 Families

Single Parent and Guardian

98 Families

MSU-MCH EHS Families

Family Served

28 Families

Two Parent/Guardian Family

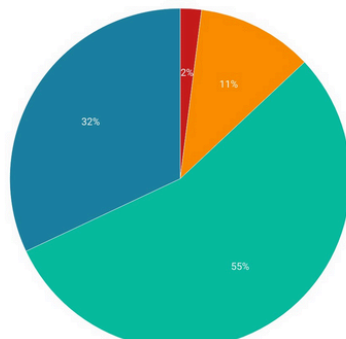
Two Families

Single Parent and Guardian

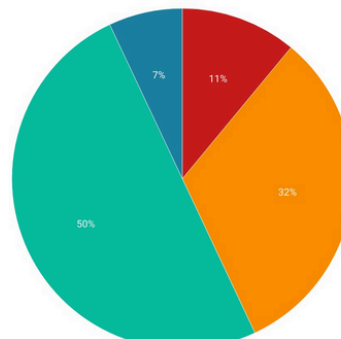
26 Families

Educational Attainment (Families at Enrollment)

- a. An advanced degree or baccalaureate degree
- b. An associate degree, vocational school, or some college
- c. A high school graduate or GED
- d. Less than high school graduate



MCH EHS

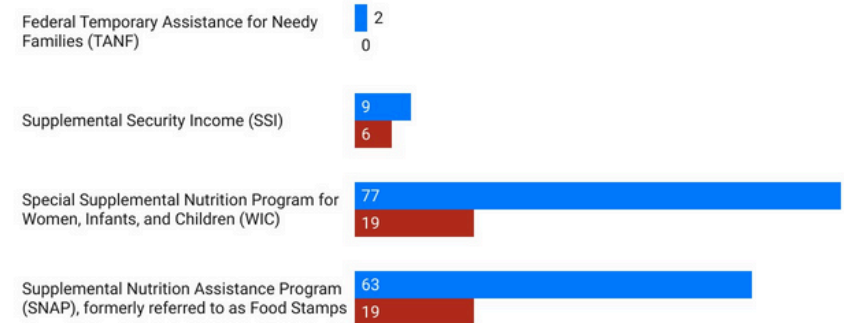


MSU MCH EHS



Federal and Public Assistance (Families at Enrollment)

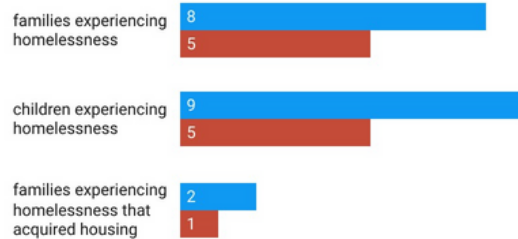
MCH EHS MSU MCH EHS



Created with Datawrapper

Homeless Services

MCH EHS MSU MCH EHS



Created with Datawrapper

Health and Well Being

Moore Community House is committed to wellness and embraces a comprehensive vision of the health of children and families and staff. Through collaborative relationships among families, staff and health professionals, child health and developmental concerns are identified, and children and families are linked to an ongoing source of continuous care that meets their current health needs and in preparations for school readiness.

MCH EHS and MSU-MCH EHS Nurse Consultants



Winnie Bell, RN
(Nichols, Bayou View, and Linda Lyons)



Jill Farrington, LPN
(Davis)



Coastal Family Health Center
Shanavier Clark, LMSW

Mental Health

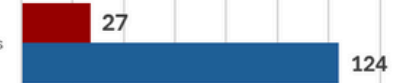
Mental Health Services are supported by consultants who are licensed mental health professionals with experience and expertise in serving young children and their families. The focus of mental health services during the MCH EHS and MSU-MCH EHS is to ensure the age-appropriate social and emotional development of children ages birth to three in collaboration with their families. Identification, prevention, and treatment services are available to ensure children have the skills they need to succeed in their daily lives. Resources and services that promote the mental health and wellness of each child's family and the staff members are also available.

Health Management

At the end of program year, children with:

Immunizations

Up to date age appropriate immunizations



Dental

Continuous accessible dental care provided by a dentist



Ongoing source of continuous, accessible health care



Healthcare

Health Insurance



■ MSU-MCH EHS ■ MCH EHS

Nutrition

Nutrition is important to a child's health, growth, and development. Nutrition services include nutrition assessments, nutritious meals approved by a dietician with modifications for children with special dietary needs, and education to empower parents to help them make healthy choices for themselves and their children.



45,333

Total Breakfast, Lunches and Snacks served during the program year

Kitchen Staff



- Retha Edwards, Kitchen Manager
- Amy Jankines Kitchen Manager
- Marian Burdine Nichols Kitchen Helper
- Lausunda Clark Bayou View Kitchen



Disabilities

Identifying young children with unique developmental needs, ensuring children receive appropriate and timely services, and helping families navigate eligibility guidelines are essential to the Head Start Birth to Five Program. The Office of Head Start requires 10% of the total funded enrollment must be children with special needs.



Parent and Family Involvement

Pregnant Moms

Pregnant Women Curriculum
Partners for a Healthy Baby



MCH EHS Pregnant Mom



MSU-MCH EHS Pregnant Women



MCH EHS AND MSU-MCH EHS AT THE END OF THE PROGRAM YEAR

- ALL PREGANT WOMEN HAD HEALTH INSURANCE
- ALL PREGANT WOMEN HAD ONGOING SOURCE OF CONTINUOUS, ACCESSIBLE HEALTH CARE.
- ALL PREGANT WOMEN HAD PRENATAL CARE DURING THEIR PREGNANCY.
- ALL PREGANT WOMEN HAD EDUCATION ON BREAST FEEDING, NUTRITION, FETAL DEVELOPMENT, RISKS OF ALCOHOL/DRUGS/SMOKING.



Parent Curriculum shine insight

MCH EHS: Ready Rosie and MSU-MCH EHS: Shine On Families

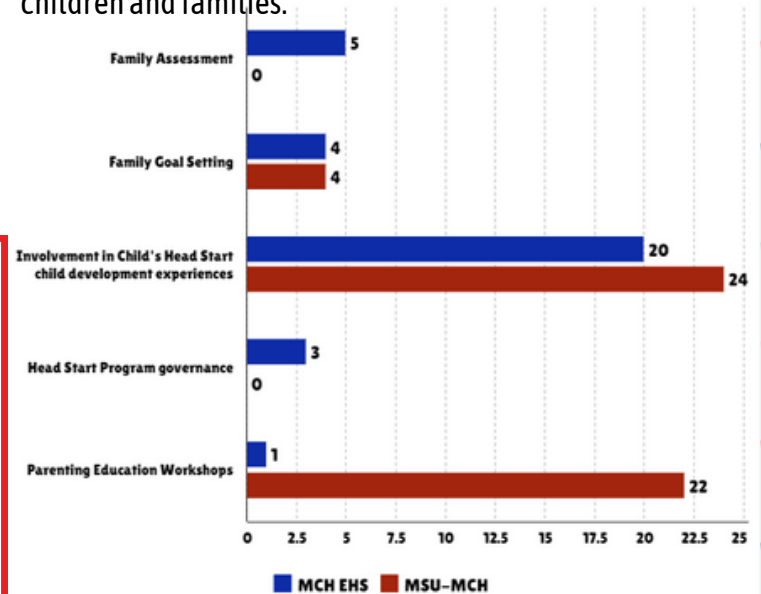


Father Engagement

Whether they live with the child or not, engaging fathers and male role models contributes to the well-being of children and families.

Goal Setting, Needs, and Referrals

MCH EHS assists families in determining their needs and supports them in achieving their own goals, such as continued education, steady employment, financial security, and housing stability. Throughout the year, families receive services and referrals to community resources for emergency crisis assistance, housing/utility assistance, mental health, ESL classes, GED classes, job training, child abuse, health/medical care, relationship/marriage education, parenting education, and asset-building services.



PFCE Assessment Tool

MCH EHS ASSESSMENT TOOL

Strength, Needs and Interest Parent Survey and Families Outcomes

90 Families were assessed during the the Post PFCE Assessment

MSU-MCH EHS Assessment Tool
Shine On Family Road Map

22 Families were assessed during the Post PFCE assessment.



Parent, Family and Community Engagement

As parents are the first and most important teachers for their children, the program supports and strengthens parent-child relationships and strives to engage families in their children's learning and development.

Parents and family members are encouraged to volunteer in a variety of ways in the classroom and attend program community engagement activities.

2023-2023 In-Kind

*We ♥ our
Volunteers*

Total Volunteers

- **223 Total Volunteers**
- **156 Parent or Former Parent Volunteers**

Total Dollars

- **\$102,076.40 Total Volunteer Dollars**
- **\$85,682.44 Total Parent or Former Parent Volunteer Dollars**

Total Hours

- **7,767.50 Total Volunteer Hours**
- **7,019.00 Parent or Former Parent Volunteer Hours**

THANK YOU TO OUR MANY COMMUNITY PARTNERS

MCH EHS looks forward to our continued collaborations with existing and new partners throughout the upcoming program years.

Thank You 



Education Services

CURRICULUM

The Creative Curriculum®
for
Infants, Toddlers & Twos



ASSESSMENT TOOL

TEACHING
STRATEGIES
GOLD

Welcome!
My Teaching Strategies®



MCH EHS CHILD OUTCOME

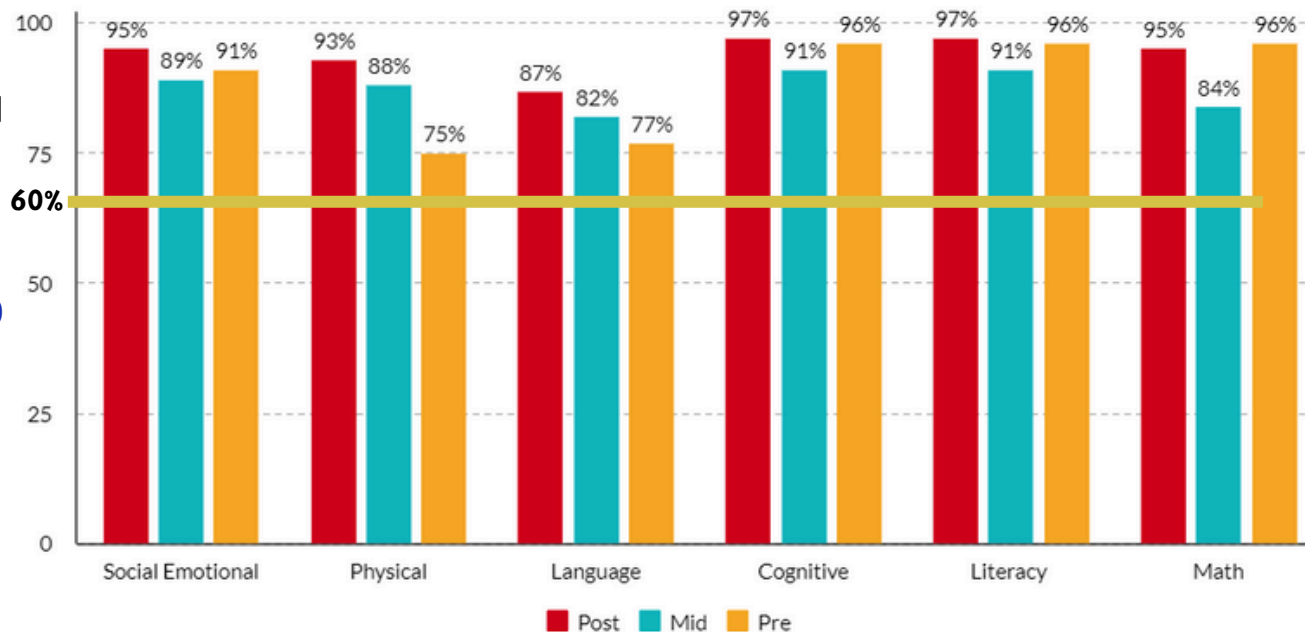
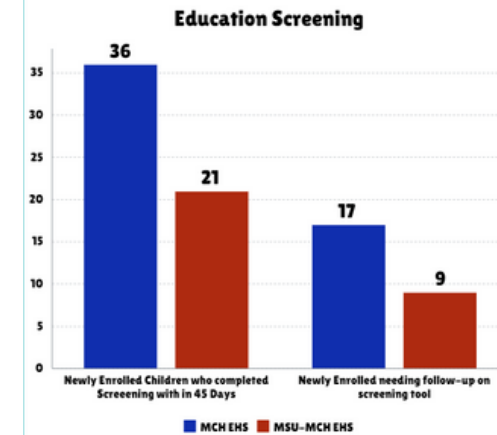
OUR TEACHERS WORK DIRECTLY WITH CHILDREN AND FAMILIES TO PROMOTE CHILDREN'S PROGRESS TOWARD SCHOOL READINESS GOALS. CHILDREN IN OUR MCH EHS PROGRESS TOWARDS THESE GOALS THROUGHOUT THE PROGRAM YEAR.

DURING THE 2022-2023 PROGRAM YEAR, CHILD ASSESSMENT DATA WAS COLLECTED THREE TIMES A YEAR.

THE GOAL FOR 2022-2023 PROGRAM YEAR IS FOR 60% OF MCH EHS AND MSU-MCH EHS CHILDREN TO BE MEETING OR EXCEEDING THEIR DEVELOPMENTAL AGE LEVELS.

DEVELOPMENTAL SCREENING TOOL

ASQ-3
AGES AND STAGES
QUESTIONNAIRE





Transition

MCH EHS implements strategies and practices to support successful transitions for children and their families transitioning out of our Early Head Start program. A smooth transition from one early childhood learning program to another is important to ensure each child continues to receive enriching early child development services and each family continues to receive the support services necessary to promote healthy family development. Parents meet with MAP-HS and MSU-HS and/or other child care settings work together throughout the transition process.

39 CHILDREN MCH EHS AND MSU-MCH EHS
SUCCESSFULLY TRANSITIONED OUT



Teaching Staff

DURING THE 2022-2023 SCHOOL YEAR, MCH EHS AND MSU EHS HAD **52 INFANT AND TODDLER TEACHERS** AND FLOATER TEACHERS EMPLOYED WITH THE AGENCY

INFANT AND TODDLER TEACHER'S AND FLOATER TEACHER'S CREDENTIALS

- 33% OF HIGH SCHOOL DIPLOMA
- 29% CHILD DEVELOPMENT ASSOCIATES IN INFANT AND TODDLER
- 15% IN TRAINING TO RECEIVE THEIR CDA IN INFANT AND TODDLER
- 17% ASSOCIATE DEGREE IN EARLY CHILDHOOD OR RELATED FIELD
- 6% BACHELOR DEGREE IN EARLY CHILDHOOD OR RELATED FIELD



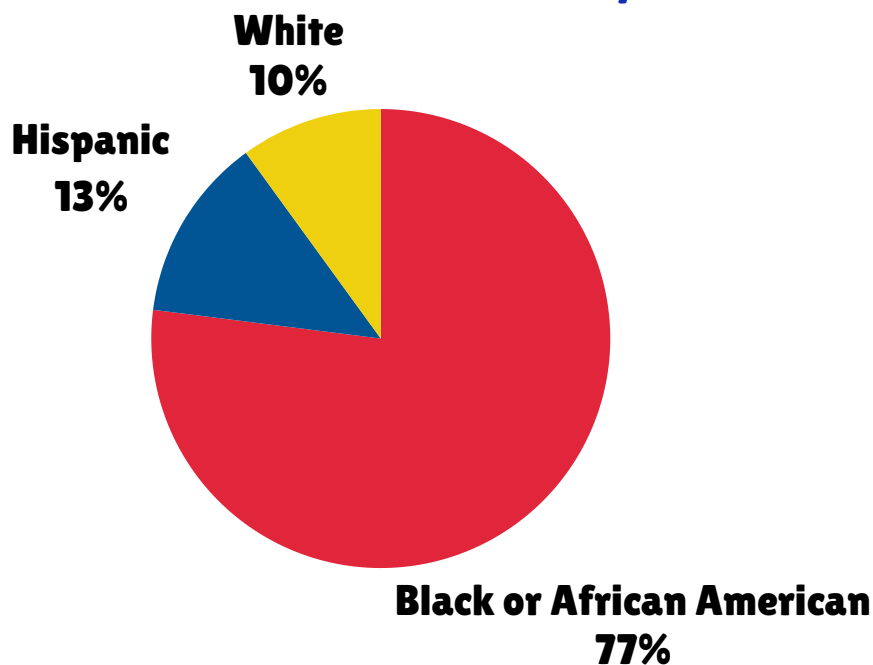
TEACHING IS A
WORK OF HEART

13 EHS Parent or Former Parent

39 NON-EHS PARENT OR FORMER PARENT

7 Dual Language Teachers:
Infant and toddler teachers and floater
teachers proficient in more than one
language other than English

Infant and Toddler Teacher's Floater's Race and Ethnicity



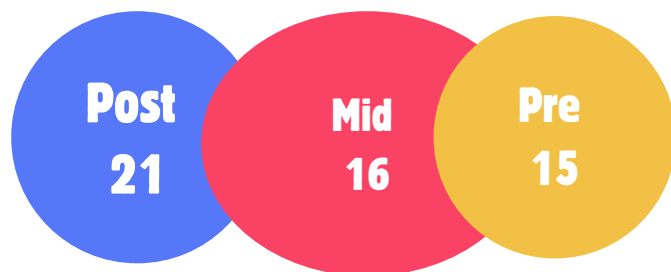


Teacher Support and Development

TPITOS

The Pyramid Infant-Toddler Observation Tool ensures that Early Head Start children are provided with a high level of classroom quality by their caregivers. The Pyramid Infant-Toddler Observation Scale (TPITOS) measures the implementation of practices associated with the Pyramid Model in infant and toddler care settings (birth-3 years). TPITOS provides a snapshot of the adult behaviors and the classroom environment variables related to supporting and promoting the social-emotional development of infants and toddlers. The TPITOS observation is made up of observational items and Red Flag items.

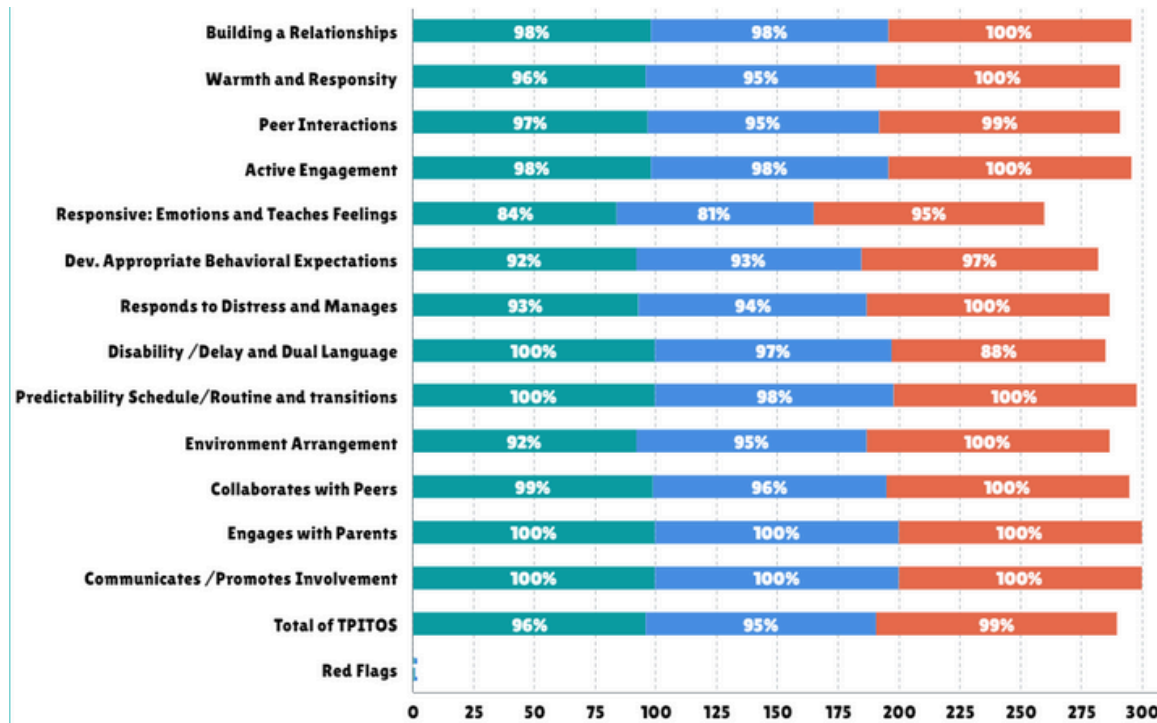
The Number of Teacher Assessed using TPITOS



Effective Coaching Practices

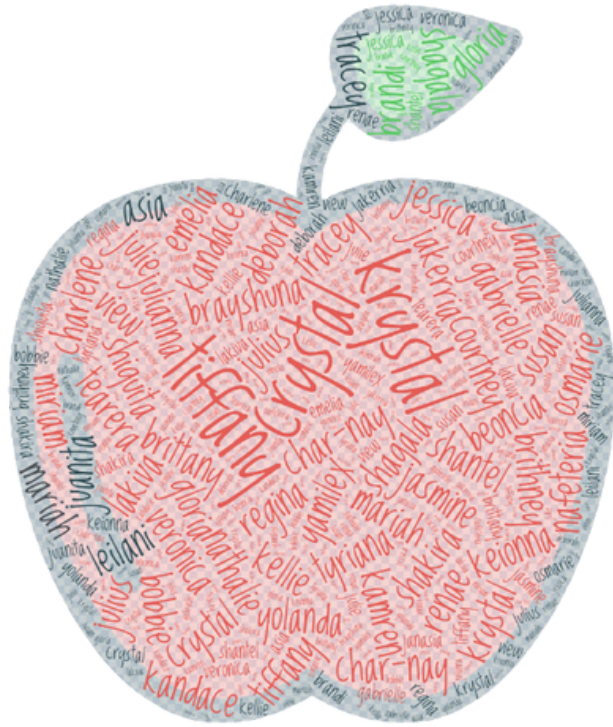
Last year, MCH EHS teacher coach and mentor teachers directly supported teachers' use of effective teaching practices and implementation of individualized experiences responsive to each child's interests, strengths, and needs. Through practice-based coaching, the teacher coach and mentor teachers helped identify and help the teachers with strategies, including intentional modeling and support plans.

TPITOS Outcomes



TEACHER OF THE YEAR FOR 2022-2023

BOBBIE HOSEY -LINDA LYONS
JESSICA BULTER- BAYOU VIEW
TRACEY BOUNDS-DAVIS
DEAUNDRASIMMONS-NICHOLS



TEACHER ACCOMPLISHMENTS

LAST PROGRAM YEAR, **SIX TEACHERS** RECEIVED THEIR CHILD DEVELOPMENT ASSOCIATE (CDA) CREDENTIAL IN INFANTA AND TODDLER.

THE TEACHERS ARE: JULIE MATTINGLY, KANDACE CHATMAN, COURTNEY GREEN, JANAISA KEMP AND KRYSTAL CLARK.



THANKYOU 30 YEARS



FOR YOUR YEARS OF SERVICE AND DEDICATION TO MCH EHS

10-20 Years

SHARON HINTON
ALISHA CURTIS
JANA KIJ
JESSICA BUTLER
KATINA SPAULDING
MONICA BRADLEY
GRETA MILLER
JOSEPHINE BRADLEY
LEON BRITTON
ALISON O'MELIA
ZAKIYYAH HASAN
LATORIA SUMRALL

5 to 9 Years

DEAUNDRASIMMONS
SHAYLA TAYLOR
GLORIA SIKES
TENISHA HASAN
KAREN ABRAMS
LATORY HUNTER
NARELIZ RIVERA
LAKIVA WASHINGTON
RETHA EDWARDS
VERONICA NANCE
MARIAN BURDINE

1 TO 4 YEARS

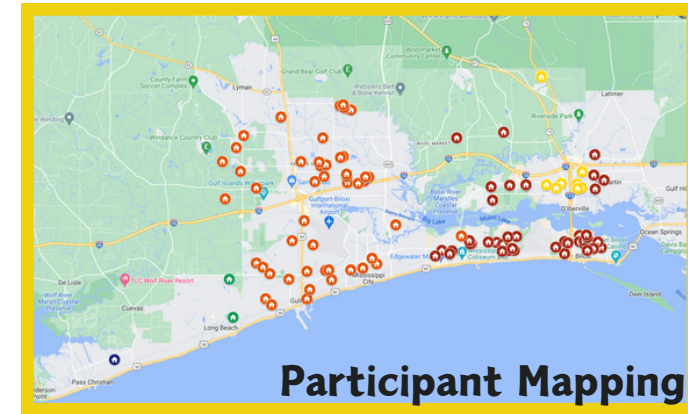
ASIA RAYMOND
CHARLENE SAN MIGUEL
CHAR-NAY KNIGHT
MIRIAM BARRERA
YAMILEX PEREZ
COURTNEY GREEN
KANDACE CHATMAN
REGINA COX
JESSICA WILLIAMS
SHIQUITA HARGROVE
DEBORAH BENSON
HOSEA DICKEY
TRACEY BOUNDS
TRULLY TURNER
SHAKIRA REED
LAUSUNDA CLARK
NAFETERIA HUDUSON
JUANITA DUNN
KELLIE CALDWELL
CRYSTAL RAYMOND
BOBBIE HOSEY
KEIONNA GAINES



Serving Pregnant Women and Children Zero to Three Years Old in Harrison County, MS



MCH Buildings and Locations



Participant Mapping

Biloxi Locations



Nichols Building
345 Nichols Drive Biloxi MS 39530
228-436-0633



Davis Building
406 Davis Street Biloxi MS 39530
228-436-0881



MCH Main Office(Finance and Human Resource Office)
325 Nixon Street Biloxi MS 39530
228-436-6601



Women in Construction
684 Walker Street Biloxi MS 39530
228-207-5265

Gulfport Locations



Linda Lyons Building
13523 Dedeaux Rd. Gulfport, MS. 39503
228-277-1010



Bayou View Building:
55 Fifty First Street Gulfport MS 39507
228-206-3515